

ASSEMBLY SHEET : WA 460407.034

Round tabletop with 3 sphere bases (mounting plate + post system)

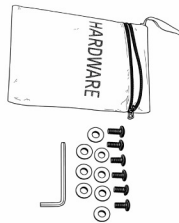
Before you start

- Work on a soft surface to avoid scratching stone.
- Use the supplied washers with every screw.
- Tighten screws evenly; do not overtighten.
- Repeat the same steps for all 3 sphere bases.



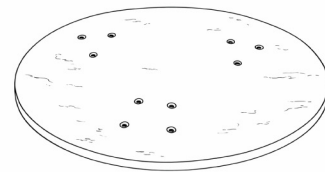
Finished table (reference)

1) Unpack hardware



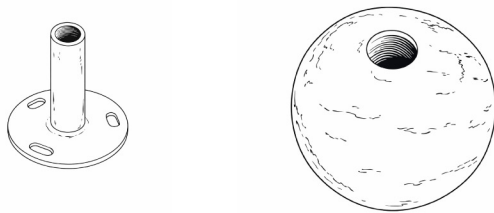
Take out screws, washers and Allen key.
Keep parts together.

2) Prepare tabletop (underside)



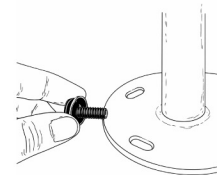
Place tabletop upside-down.
Locate the pre-drilled holes.

3) Attach mounting plate + post



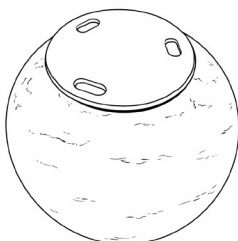
Align the plate slots with the holes.
Insert screws with washers and tighten.

4) Tighten screws evenly



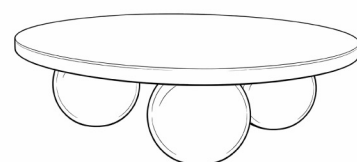
Tighten each screw a little at a time.
Ensure the plate sits flat.

5) Fit sphere onto post



Slide sphere onto the post (hole facing up).
Repeat for all 3 spheres.

6) Assemble & flip upright



After all 3 bases are installed, flip the table upright.
Check stability.